



Liberate Industrial Data And Scale Digital Value

8

DLF_
DATA
LIBERATION
FRONT



8

DLF

DATA
LIBERATION
FRONT



Jaco Markwat

Team Lead
Element8



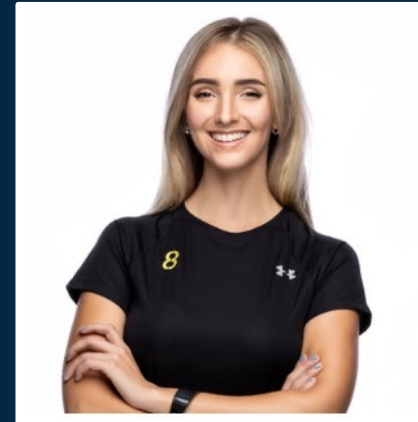
Dilan Jivanji

IT Projects Manager
Watercare Innovations



Gary Lowenstein

Customer Success Lead
Element8



Laura Strydom

Customer SuccessTeam
Element8

SERVE

Humbly **serve**. Our community and the industry.

Learn from others. And share what we've learnt.

Provide intuitive solutions that **scale**.

Help ensure a **data-driven** and flourishing future for all.

PURPOSE

FRI
23 FEB
2024

DLF.
DATA
LIBERATION
FRONT

8

01 COMMUNITY NEWS

02 PRODUCT UPDATES

03 WATERCARE INNOVATIONS

04 Q & A

WELCOME!

Axxela



GLENCORE



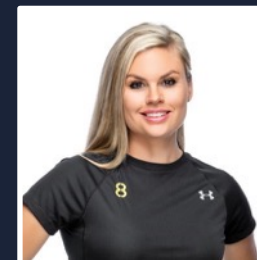
tharisa



NEW PARTNER CERTIFICATIONS



Partner Page



Clarise Rautenbach
Channel Partner Lead
Element8

10 Top-Selling Integrators

January-December 2023



 **advansys**



integ
System Integrators



 **NEXT**
integration



 **AfriZlek**



CSI CONTROL SYSTEMS
INTEGRATION



CSS | Control
Software
Solutions



 **devcotech**
electrical engineering



 **DARNER**
ENGINEERING



 **VisiPraxis**
Consultation | Engineering | Implementation



iritron
an E&P Group company

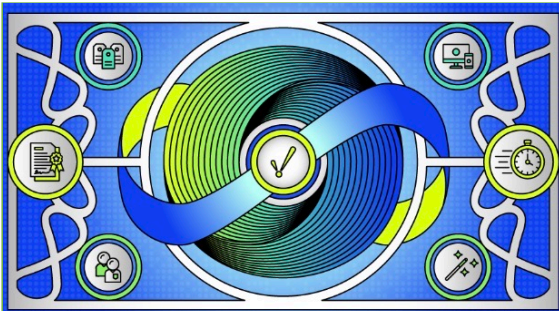
UPCOMING TRAINING

	Ignition Core	04-08 March	Virtual
	Canary	11-12 March	Virtual
	Ignition Perspective	13-15 March	Virtual
	Flow Core	18-20 March	Johannesburg
	Flow Advanced	25-26 March	Johannesburg

Register here



HELPFUL RESOURCES: WHAT WE'RE WATCHING



Empower Innovation With Unlimited Licensing

How to Ease the pain points of
conventional licensing models

Inductive Automation



Start Tracking Downtime in Less than 30 Minutes

Track downtime, classify events, and
perform analytics around your downtime

Flow Software



Manufacturing Production Report

50 Production KPIs and Events in 30
Minutes

Flow Software



THE DISCOVER GALLERY

2024 Discover Gallery

A centerpiece at the annual Ignition Community Conference (ICC), the Discover Gallery is a video showcase of the top Ignition projects from around the globe. No project is too big or too small to be considered! If you have done an exceptional Ignition project that you'd like the rest of the world to see, click the link below to get your submission started.

Submission deadline is April 30, so submit your projects soon!

If Your Project Is Selected



You'll get one free Ignition Community Conference ticket so you can show off and share your project with the community.




Your project will be displayed at the conference and on our website during and after the event.




You will be eligible to win a prestigious Firebrand Award in person at the Ignition Community Conference.

Enter Here





 Inductive Automation

 Ignition Distributors

Distributor Now Supporting

Angola, Botswana, Comoros, Democratic Republic
of Congo, Kingdom of Eswatini (Swaziland), Lesotho,
Madagascar, Malawi, Mauritius,
Mozambique, Tanzania and Zimbabwe



8



IGNITION

THE UNLIMITED PLATFORM FOR
SCADA AND SO MUCH MORE





CIRRUS LINK & SNOWFLAKE

IoT Bridge for Snowflake



+ Snowflake is a fully managed **Cloud Data Platform**

+ **Out-of-the-box** features:



+ Separation of **storage and compute**

+ On-the-fly **scalable compute**



+ Data **sharing & cloning**

+ **Third-party tools** support

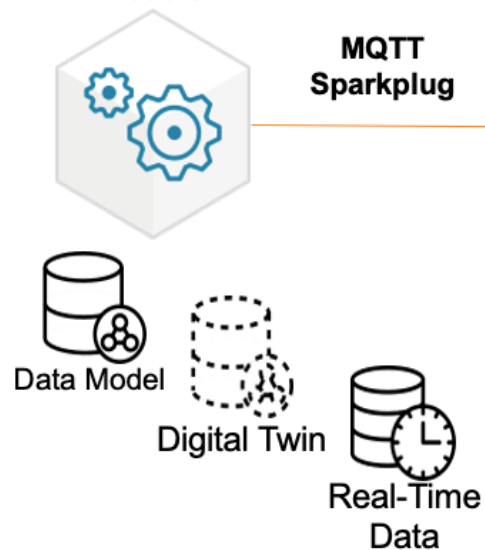


8



CIRRUS LINK & SNOWFLAKE

MQTT Transmission Module



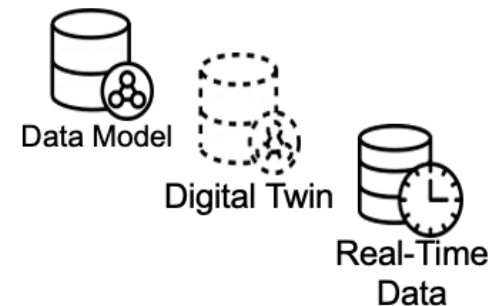
MQTT Server

MQTT Sparkplug



IoT Bridge for Snowflake

Snowpipe Streaming



IoT Bridge for Snowflake is available from both the AWS and Azure Marketplace



Ignition! 8.3

by inductive automation

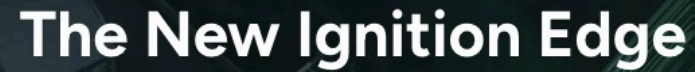


WHAT'S COMING IN 8.3

SCHEDULED FOR LATE 2024

- + Expanded **Enterprise Deployment Management**
- + New **Time Series Historian** module
- + What are **Event Streams**?
- + NEW FEATURES:
 - + **Native Drawing Tools** for Perspective
 - + Refreshed **Gateway UI**
- + And, of course, **upgraded Security**





A Stronger and Simpler Ignition Edge (8.1.36)

The screenshot displays a tablet interface for a water filtration system. The top navigation bar includes a home icon, the title 'Filters', and a date/time stamp 'Aug 26, 7:43 PM' along with a user profile icon. The main interface is divided into several sections:

- Filter 1 Controls:** A grid of buttons for 'Filter 1' (dashed border), 'Filter 2', and 'Filter 3'. Below this is a 'Filter 1 Status' panel with 'Inlet', 'Off', and 'Auto' buttons.
- Influent Valve:** A panel with 'Close', 'Open', 'Off', and 'Auto' buttons, and a green valve icon.
- Air-Treater Valve:** A panel with 'Close', 'Open', 'Off', and 'Auto' buttons, and a green valve icon.
- Filter 1 Level:** A central panel showing a blue liquid level in a tank.
- Backwash Valve:** A panel with 'Close', 'Open', 'Off', and 'Auto' buttons, and a green valve icon.
- Filter to Water Valve:** A panel with 'Close', 'Open', 'Off', and 'Auto' buttons, and a green valve icon.
- Effluent Valve:** A panel with 'Close', 'Open', 'Off', and 'Auto' buttons, and a green valve icon.
- Backwash Ventilation Valve:** A panel with 'Close', 'Open', 'Off', and 'Auto' buttons, and a green valve icon.
- Backwash Valve:** A panel with 'Close', 'Open', 'Off', and 'Auto' buttons, and a green valve icon.

At the bottom, a graph shows a time-series plot of a signal, likely flow or pressure, with a red line fluctuating between 0 and 100. The x-axis is labeled with time intervals: '00:00:00', '00:00:05', '00:00:10', '00:00:15', '00:00:20', '00:00:25', '00:00:30', '00:00:35', '00:00:40', '00:00:45', '00:00:50', '00:00:55', '00:01:00'.

- MQTT-enabled, Unlimited tags and devices for included drivers
- Edge Sync Services, Edge EAM & Edge Compute functionality are all included

- Unlimited tags and device connections, and everything else in Edge IIoT, plus local visualization and control at the edge through either a Perspective session or Vision client

- Internal tag historian
- Event logging
- Remote synchronization
- Alarm notifications

8



CANARY

THE DATA HISTORIAN
THAT DOESN'T COMPROMISE

8



VERSION 23

NEW FEATURE:

- + The **Linked Tags** feature
 - + Value -> **Minimises** tag maintenance
- + Difference between **linked tags** and **renaming tags**

Tag A history

Tag B history

Tag C history



VERSION 24

NEW FEATURES:

- + **Licensing** -> License pushback
- + **Axiom** -> Cross-application reports
- + **Calculations** -> Single sender session
- + **Store and Forward** -> New service
- + **Identity Service** -> New service
- + **Linux Support** is in the works!



FLOW

SOFTWARE



FLOW Version 7.0 (October 2023)

1. Multiplatform Support – Linux and Docker!
2. Apache Kafka Streams
3. New Regression Functions for ML Fundamentals
4. ThinManager Support
5. Style Refresh and UI Improvements
6. Performance Enhancements
7. AVEVA Historian Store and Forward

7.0

FLOW Version 7.2 (December 2023)



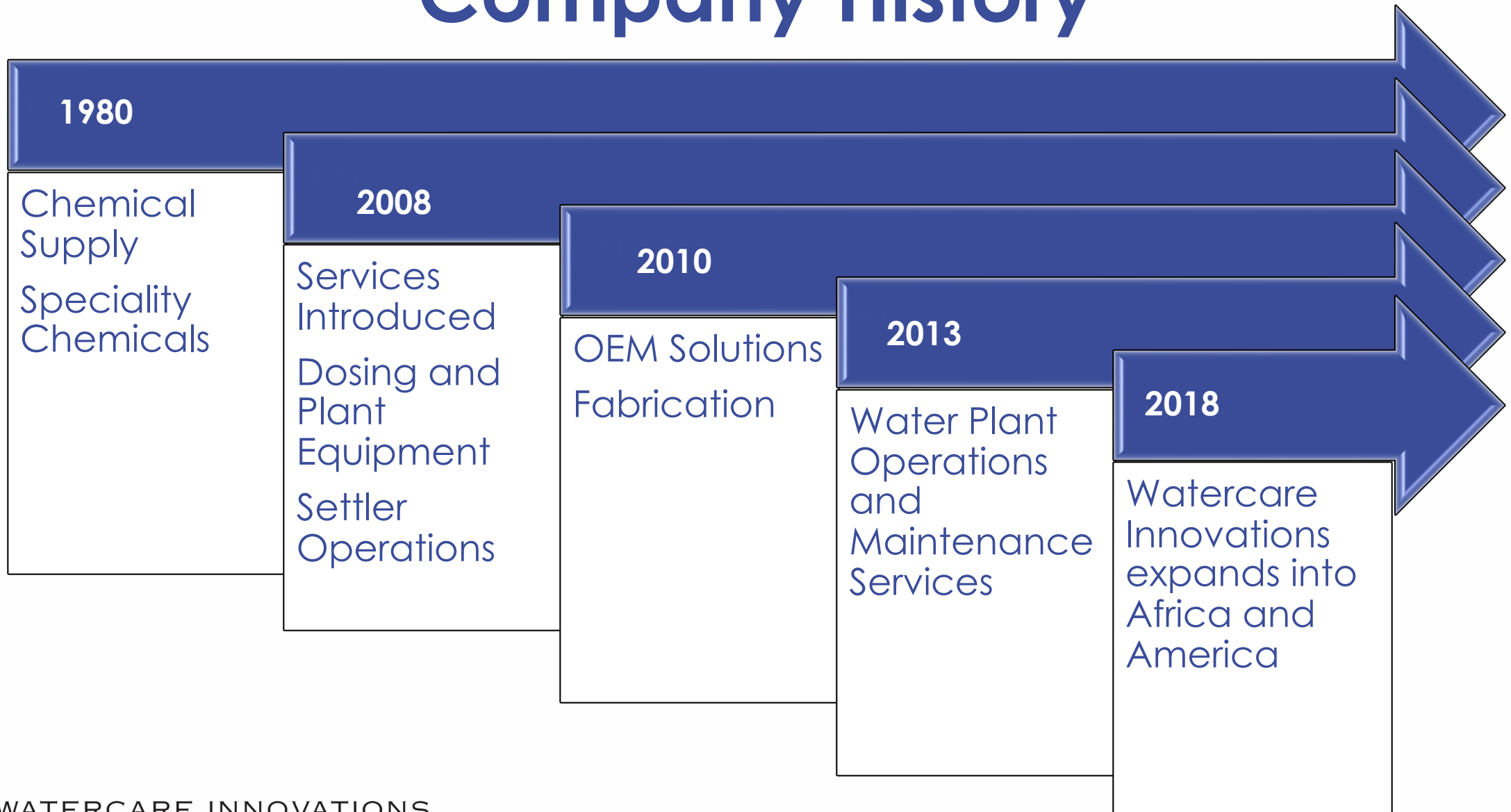
1. A CLI (Command Line Interface)
2. Enhancements to the Remote Platform functionality
3. The ability to use a REST API data source in Flow Tags
4. New Data Source: Amazon Timestream

FLOW Version 7.3 (February 2024)

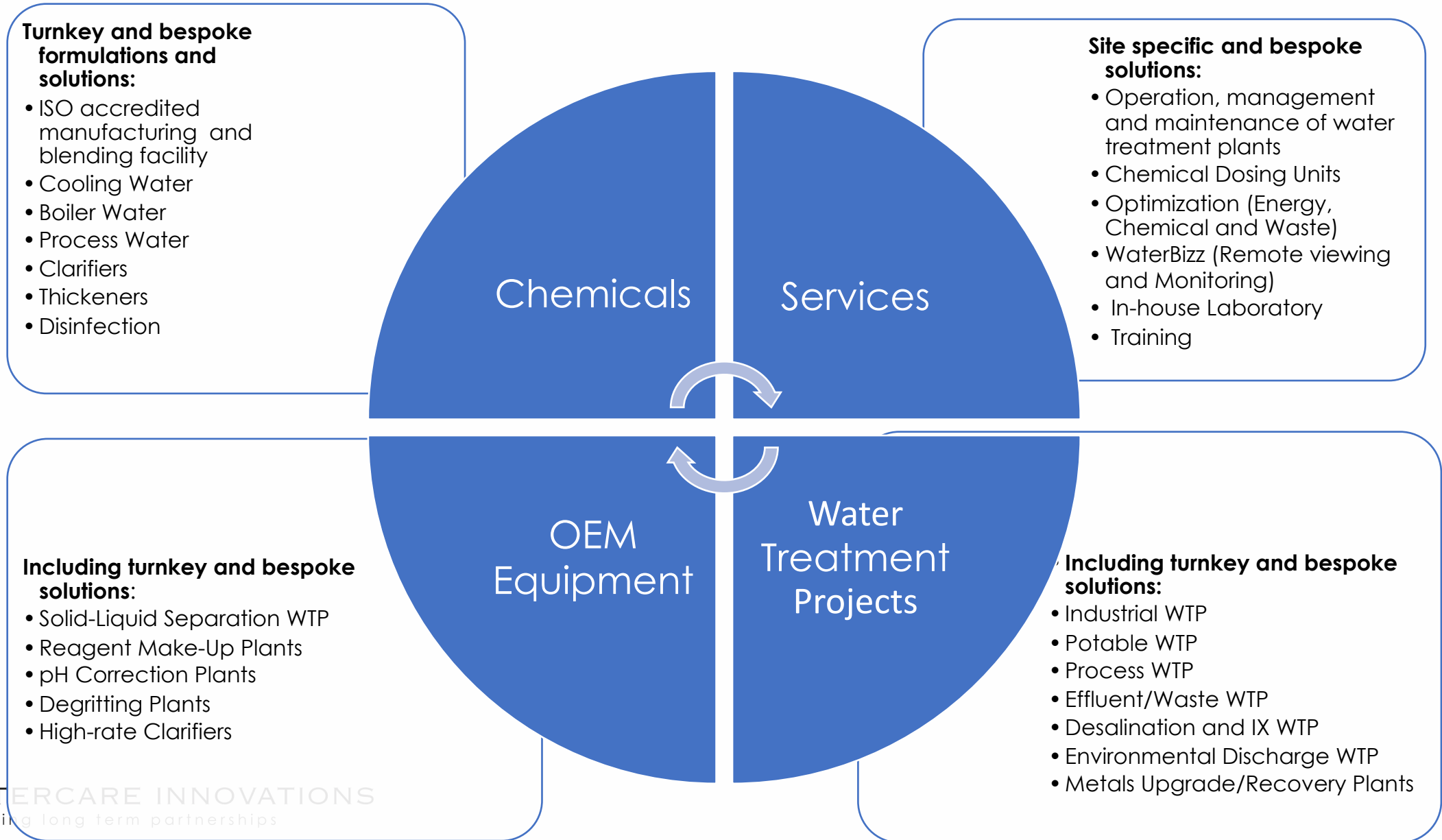
1. Event Period integration for SQL Based Data Consumers
2. Improved handling of Json payloads received by the Web API Data Source
3. Performance improvements relating to Chart configuration in the Config Tool



Company History

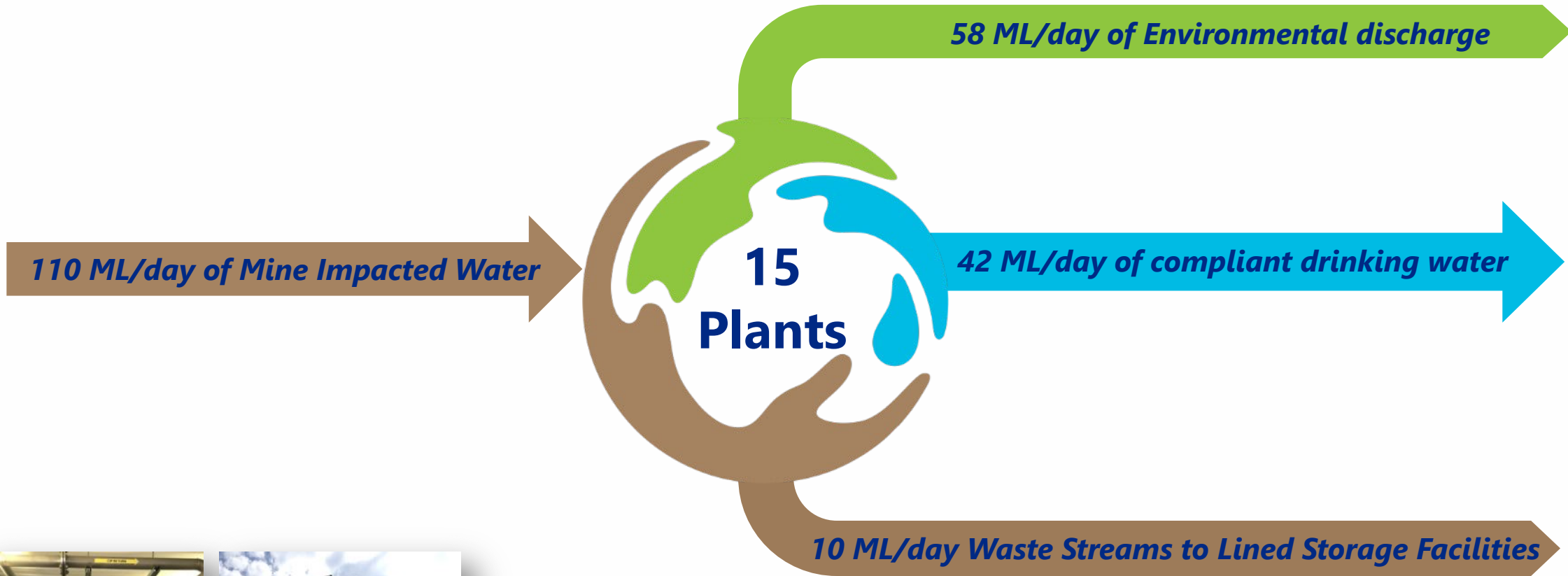


Capabilities and Core Offering





Overview of Industrial Water Plants





Customer Projects

Water/Wastewater

Products: Ignition and Cirrus Link MQTT

Requirements

- Priority was live monitoring, then control and trending, and finally prediction
- Technology selection: Open-source compatible, extendable, unlimited tags, Linux-based and community-driven
- Better data management system for manual data
- Moreover, the ability to build custom solutions within the Ignition environment

Solution

- Cloud application controls 12 treatment sites
- > 28000 tags
- > 1500 manual data capture systems
- 25 Connected Databases
- Six key projects

Value

- Scalable tag management
- Robust and customisable historian (RO normalisation)
- Templating and UDTs are critical
- Centralises what would otherwise be a very disconnected set of services
- The control room provides oversight of operations otherwise not possible
- Engineers can diagnose issues without necessarily being on-site
- Centralised management of data, be it IIoT or Human driven

Future

- Addition of non-plc systems, data mining and prediction
- System to automate Lab with a custom LIMS system
- Live data referencing and validation



Customer Projects

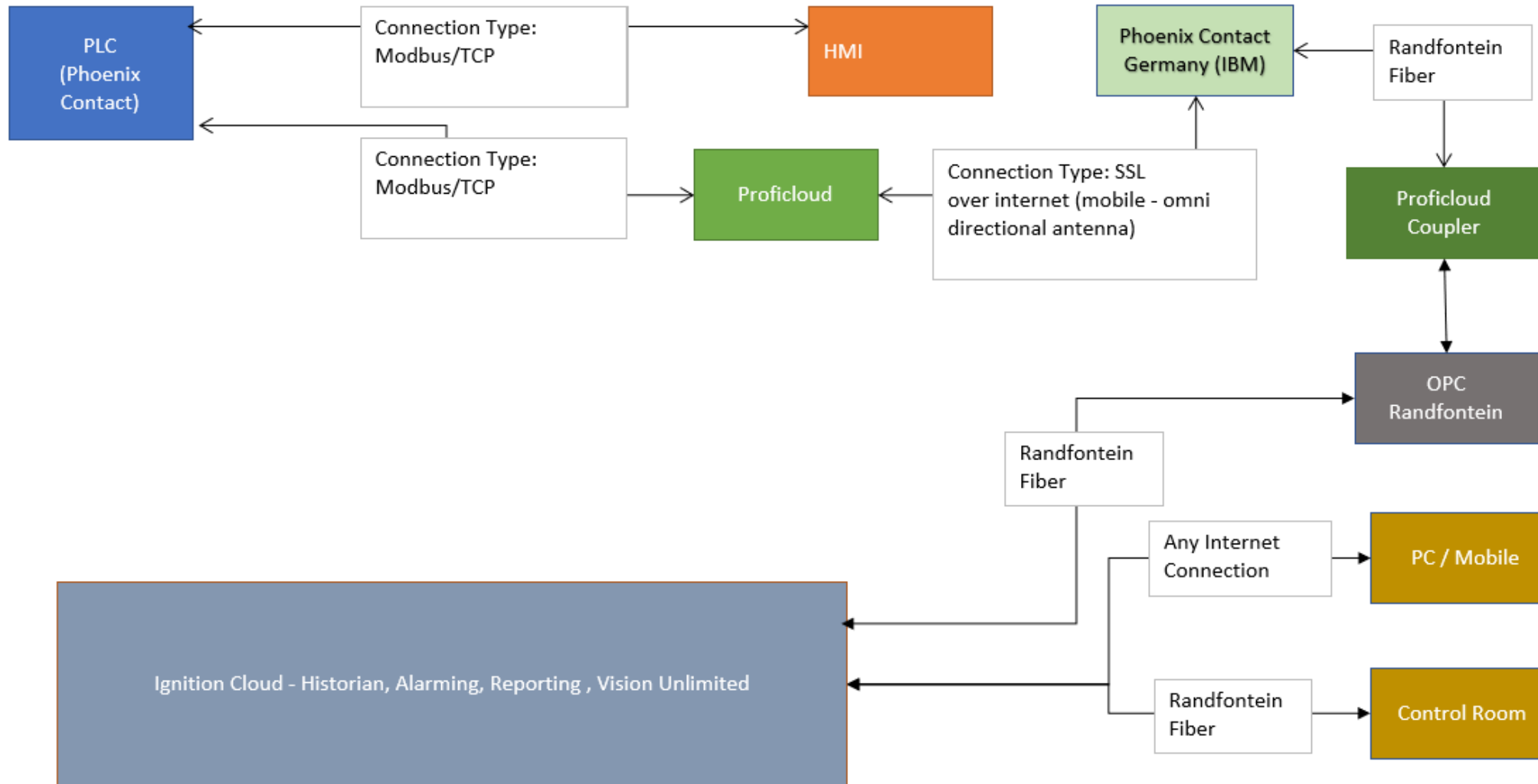
Water/Wastewater

Products: Ignition and Cirrus Link MQTT

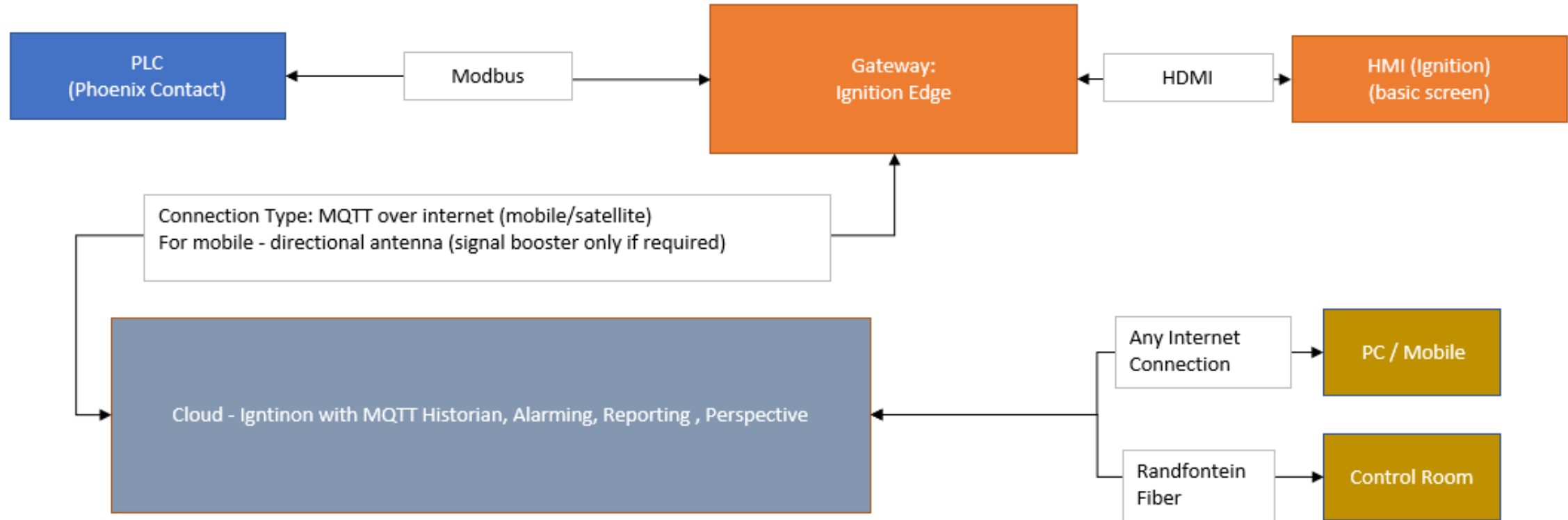


Architecture

Initial Cloud Setup



Current Cloud Setup





Customer Projects

Water/Wastewater

Products: Ignition and Cirrus Link MQTT

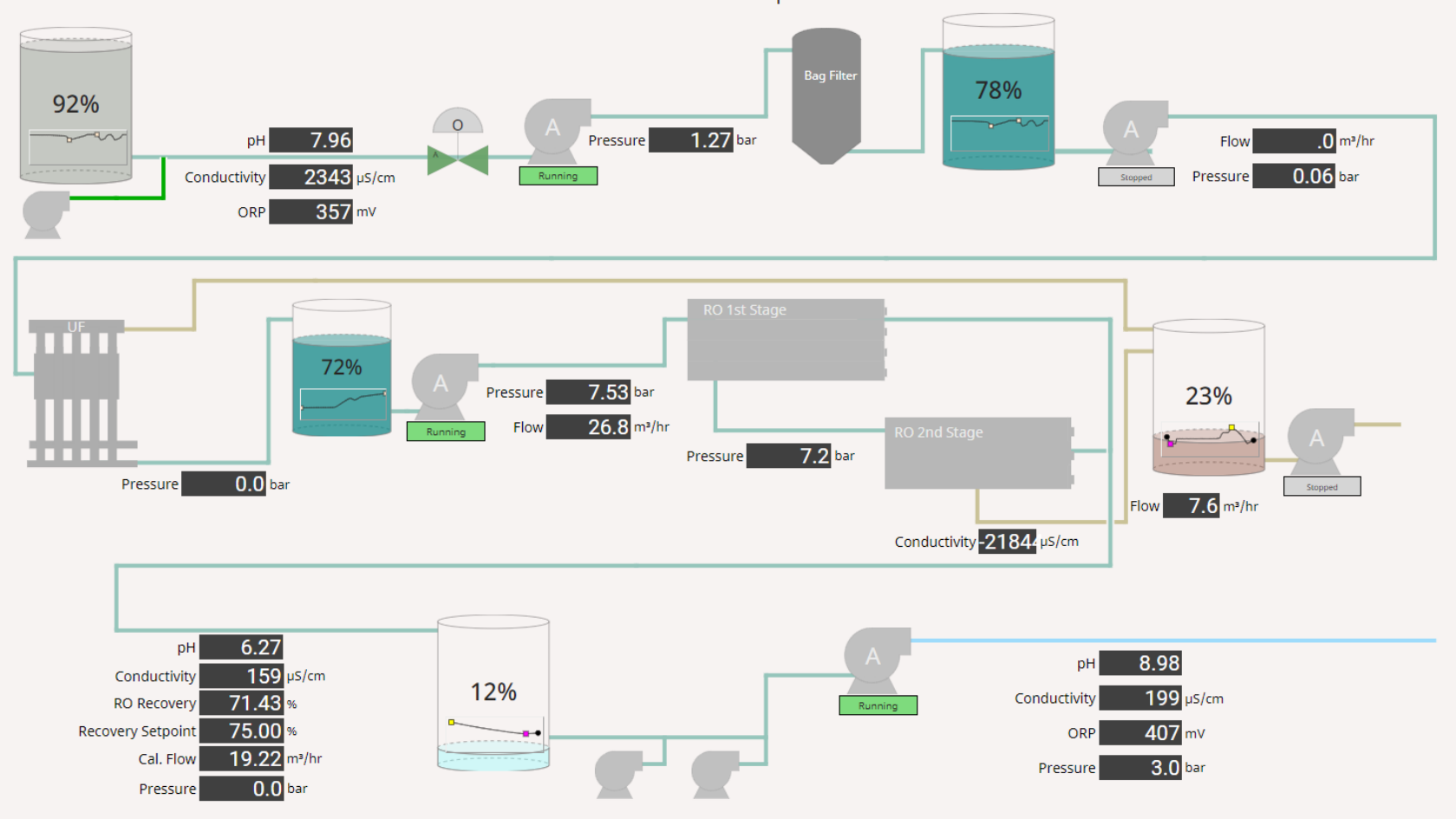


Control Room and Application

Control Room



New Cloud SCADA





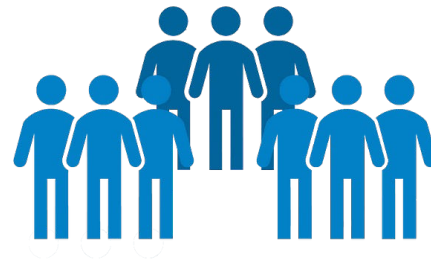
8

DLF

DATA
LIBERATION
FRONT



Linked 
Groups



A person stands on the peak of a dark, jagged mountain. Below the peak, a thick layer of clouds fills the valley. The sun is setting in the upper right corner, casting a warm glow over the scene. The word 'ELEV' is written in large, white, sans-serif capital letters across the middle of the image, with the person standing on the peak of the letter 'V'.

ELEV

OCTOBER 2024

JOHANNESBURG
DURBAN
CAPE TOWN